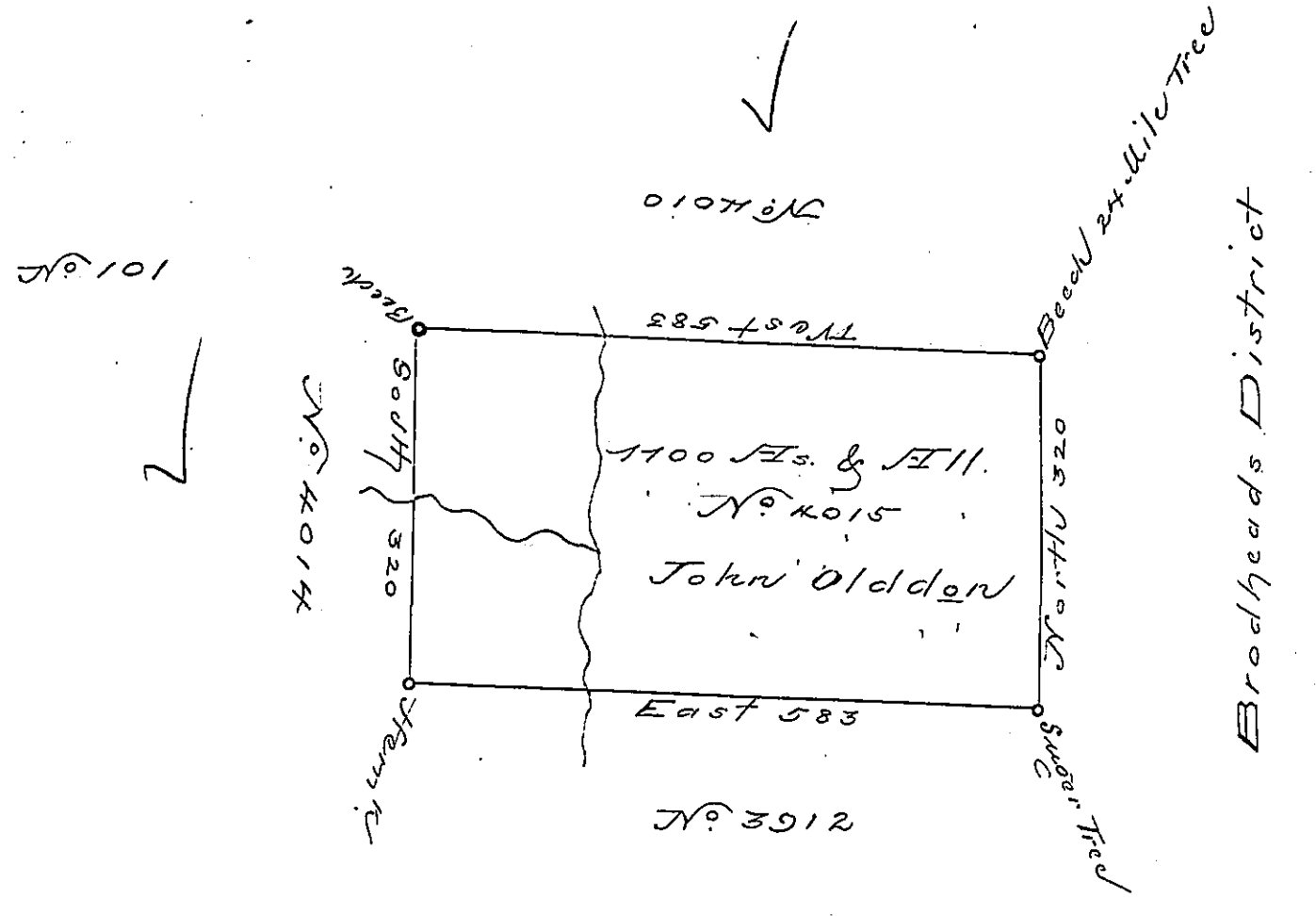


(Portage  
- Potter)



Situate seven miles south of the Allegheny River in North<sup>d</sup>. County containing 1100 acres and the usual allowance for Roads &c.

Surveyed October 19<sup>th</sup> 1793 for John Oldden in pursuance of a Warrant No. 4015 bearing date August 26<sup>th</sup> 1793.

Daniel Brodhead Esq<sup>r</sup> John Canan Secy

IN TESTIMONY that the above is a copy of the original remaining on file in the Department of Internal Affairs of Pennsylvania, made conformably to an Act of Assembly approved the 16th day of February, 1833, I have hereunto set my Hand and caused the Seal of said Department to be affixed at Harrisburg, this

— first — day of — October — 1895.

James W. Latta  
Secretary of Internal Affairs.